

Mögliche Basteloptionen

Claus Schuster

24.Mai 2024

Gliederung

Lasercutter

- Gravieren
- Schneiden
- 3D Modelle stecken

3D Drucker

- Fremdmodelle
- Eigene Modelle konstruieren (CAD)
- Eigene Modelle modellieren

Elektronik

- Einfache Schaltungen
- Hausautomation
- Kopplung Mechanik – Elektronik

Scanner / Photogrammetrie

Lasercutter

Gravieren



Rathaus

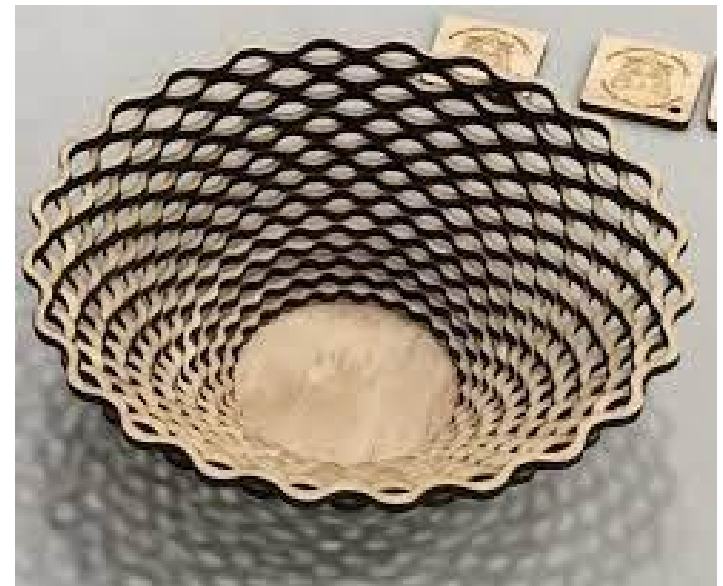
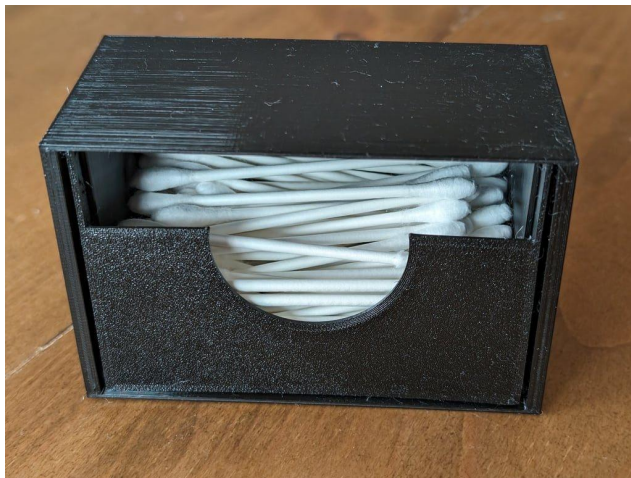
Lasercutter

Schneiden



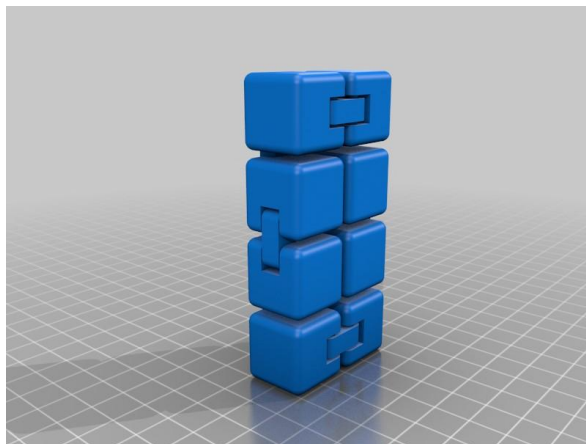
Lasercutter

3D Modelle stecken



3D Drucker

Fremdmodelle



3D Drucker

Eigene Modelle konstruieren (CAD)

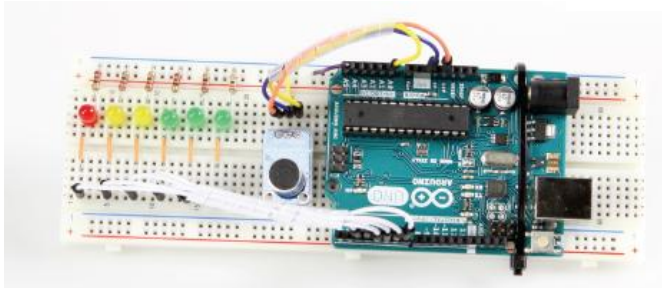


3D Drucker

Eigene Modelle modellieren

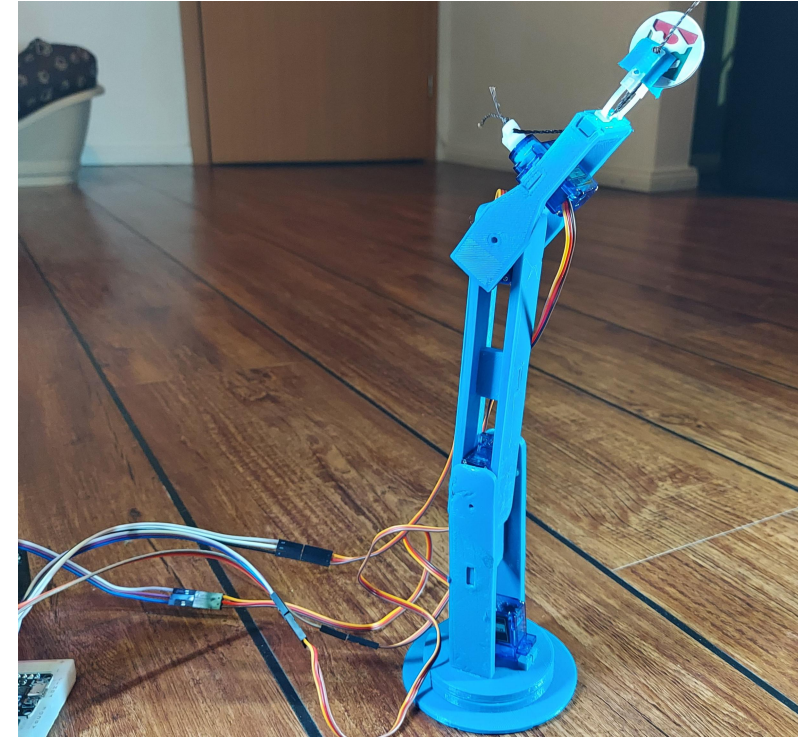


Elektronikwerkstatt



Lärmampel
(esp32)

Hausautomation
(Raspi)

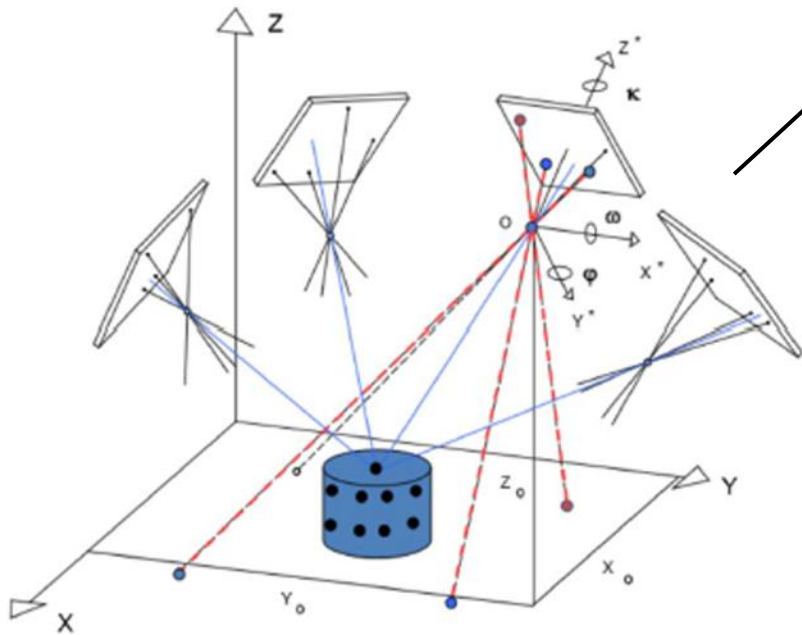


Roboterarm

Fotogrammetrie

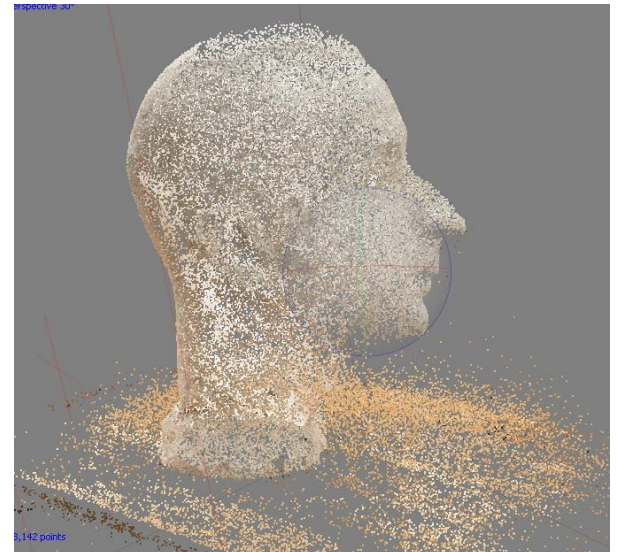


Bilderfassung



Software

Punktwolke



3D Modell